

**SUBDIVISION PLAN OF LOT 4 AND LOT 5
SECTION 28 TOWNSHIP 23 ODYD PLAN EPP120134**

BCCS 82E.093



THE INTERSPACED PLOT SIZE OF THIS PLAN IS 660mm IN WIDTH BY 432mm IN HEIGHT (C SIZE) WHEN PLOTTED AT A SCALE OF 1:2000

PLAN EPP129792

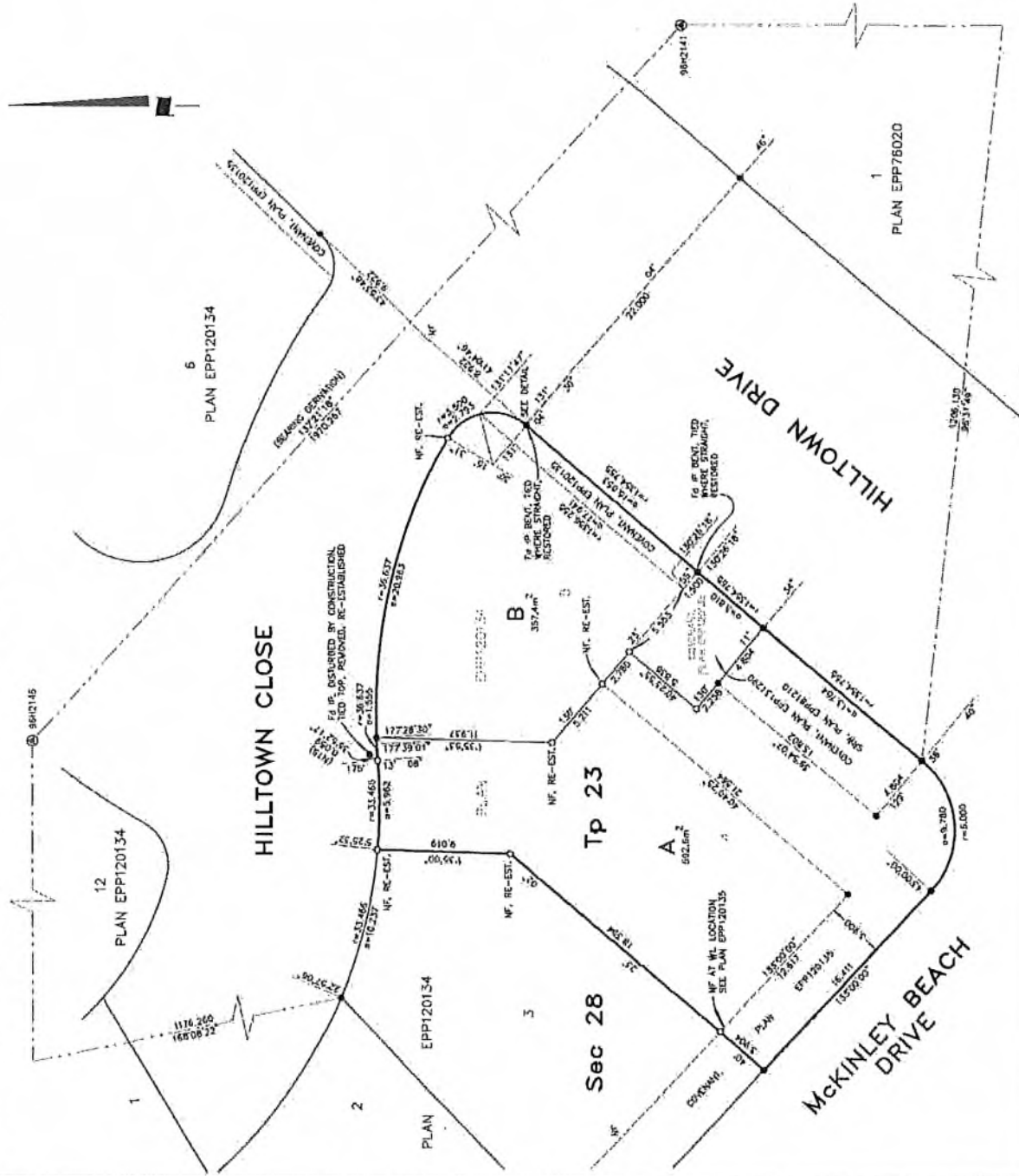


TABLE OF GEODETIC CONTROL MONUMENTS

MARK (C/S)	X, Y COORDINATES	ESTIMATED ABSOLUTE	
OGH	NORTHING	EASTING	REMARKS
96H2141	5239945.180	276305.474	0.01
96H2145	5541176.467	324029.223	0.01

LEGEND

INTEGRATED SURVEY AREA NO. 4, CITY OF KELLOWNA,
M.D.S.S. (C/S) 40.03.001

CRIP BEARINGS ARE DERIVED FROM OBSERVATIONS
BETWEEN GEODETIC CONTROL MONUMENTS 96H2141 AND
96H2145. DISTANCES ARE REFERRED TO THE CENTRAL MERIDIAN
OF UTM ZONE 11.

THE UTM COORDINATES AND ESTIMATED ABSOLUTE
ACCURACY ACHIEVED ARE DERIVED FROM MASCOOT
PUBLISHED COORDINATES AND STANDARD DEVIATIONS FOR
GEODETIC CONTROL MONUMENTS 96H2141 AND 96H2145.

THIS PLAN SHOWS HORIZONTAL CIRCUMFERENCES, TO COMPUTE
DISTANCES UNLESS OTHERWISE SPECIFIED. TO COMPUTE
DISTANCES UNLESS OTHERWISE SPECIFIED, THE AVERAGE
BY THE AVERAGE CIRCUMFERENCES OF 0.9990004
WHICH HAS BEEN DERIVED FROM GEODETIC CONTROL
MONUMENTS 96H2141 AND 96H2145.

- DENOTES CONTROL MONUMENT FOUND
- DENOTES STANDARD IRON POST FOUND
- DENOTES STANDARD IRON POST PLACED
- NTS DENOTES NOT TO SCALE
- RE-EST. DENOTES RE-ESTABLISHED

THIS PLAN LIES WITHIN THE REGIONAL DISTRICT OF
CENTRAL OKANAGAN.

THIS PLAN LIES WITHIN THE JURISDICTION OF THE
APPROVING OFFICER FOR THE CITY OF KELLOWNA.

THE FIELD SURVEY REPRESENTED BY THIS PLAN WAS
COMPLETED ON THE 21ST DAY OF JULY, 2023
CAMERON HENRY, BCLS BS7

Ferguson Land Surveying & Geomatics Ltd.
 B.C. MAP CAMAK LAND SURVEYORS
 1000 WEST 10TH AVENUE, KELLOWNA, B.C.
 TELEPHONE: (250) 763-3115 FAX: (250) 763-0321

JOB No 23197-SUB-REV1

5/10/2024 (Rev. 15, 2023) www.fergusonlandsurveying.com
 19/06/2024

REFERENCE PLAN OF PART OF LOT B
SECTION 28 TOWNSHIP 23 ODYD PLAN EPP129792
FOR RELEASE PURPOSES PURSUANT TO SECTION 99(1)(e) OF THE LAND TITLE ACT
BCGS 82E.093

PLAN EPP131290



THE INTENDED PLOT SIZE OF THIS PLAN IS 560mm IN WIDTH BY 432mm IN HEIGHT (C SIZE) WHEN PLOTTED AT A SCALE OF 1:200

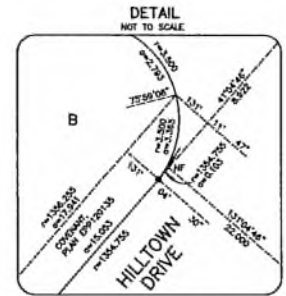
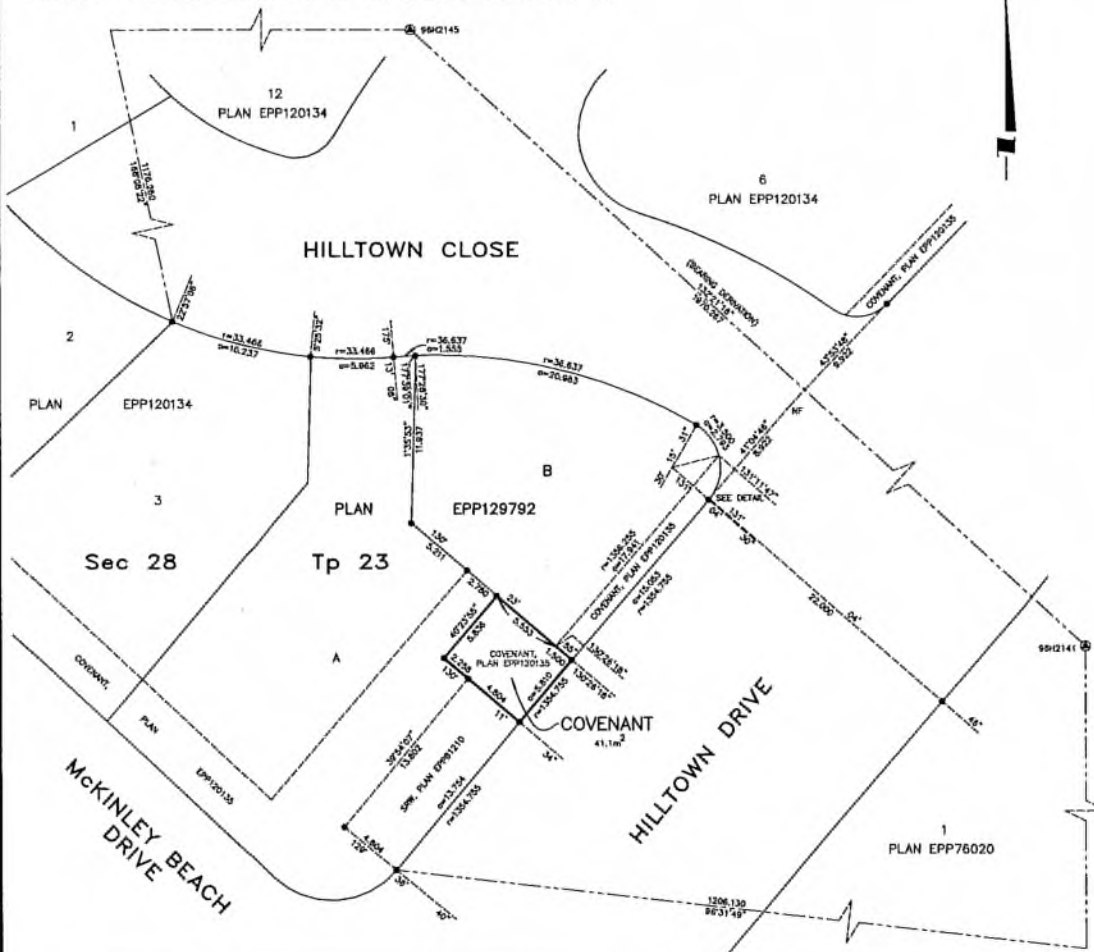


TABLE OF GEODETIC CONTROL MONUMENTS

NA83(CSRS)	4.0.D.B.C.1	UTM	ZONE 11	COORDINATES
OCM	NORTHING	EASTING		ESTIMATED ABSOLUTE ACCURACY
96H2141	5238848.180	326385.474		0.01
96H2145	5541176.467	324929.621		0.01

LEGEND

INTEGRATED SURVEY AREA NO. 4, CITY OF KELLOWIA, NA83 (CSRS) 4.0.D.B.C.1
 GRID BEARINGS ARE DERIVED FROM OBSERVATIONS BETWEEN GEODETIC CONTROL MONUMENTS 96H2141 AND 96H2145 AND ARE REFERRED TO THE CENTRAL MERIDIAN OF UTM ZONE 11.
 THE UTM COORDINATES AND ESTIMATED ABSOLUTE ACCURACY ACHIEVED ARE DERIVED FROM MASCOT PUBLISHED COORDINATES AND STANDARD DEVIATIONS FOR GEODETIC CONTROL MONUMENTS 96H2141 AND 96H2145.
 THIS PLAN SHOWS HORIZONTAL GROUND-LEVEL DISTANCES UNLESS OTHERWISE SPECIFIED. TO COMPUTE GRID DISTANCES, MULTIPLY GROUND-LEVEL DISTANCES BY THE AVERAGE COMBINED FACTOR OF 0.9999044 WHICH HAS BEEN DERIVED FROM GEODETIC CONTROL MONUMENTS 96H2141 AND 96H2145.
 (●) DENOTES CONTROL MONUMENT FOUND
 (○) DENOTES STANDARD IRON POST FOUND
 THIS PLAN LIES WITHIN THE REGIONAL DISTRICT OF CENTRAL OKANAGAN.
 THE FIELD SURVEY REPRESENTED BY THIS PLAN WAS COMPLETED ON THE 21st DAY OF JULY, 2003
 CAMERON HENRY, BCLS R57

Ferguson Land Surveying & Geomatics Ltd.
 B.C. AND CANADA LAND SURVEYORS
 404-1630 PANDOSY STREET, KELLOWIA, B.C.
 TELEPHONE (250) 763-3115 FAX (250) 763-0321

JOB No 23197-COV-REV1
 6/30/03 (Aug 15, 2007) Job File: 23197-COV-REV1-001.DWG
 2007 8/15 01 PLN/02 SET FILE